

OWLIE HOLLOW FIBER HEMODIALYZER



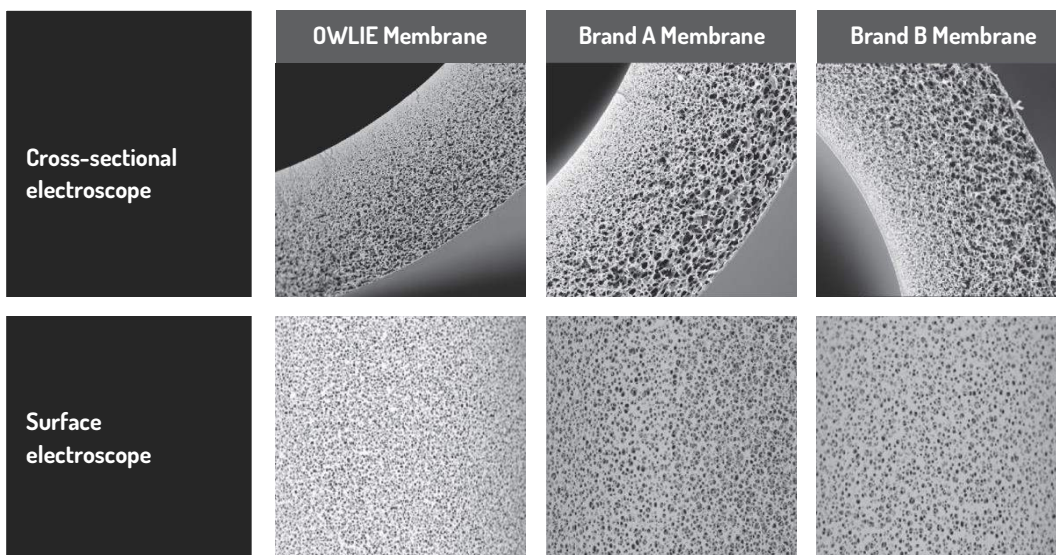
ADVANTAGES

PES is simpler and it has better stable physical and chemical properties than PS.

- 🎯 **PP Shell, PES Membranes, BPA Free**
- 🎯 **Better Bio-Compatibility**
- 🎯 **Excellent Toxin Clearance**
- 🎯 **Optimized Design**
- 🎯 **Smaller Blood Volume**

CONTRAST

The section microstructure shows that OWLIE's hollow fiber membrane has the lightest dense layer. The smallest aperture change, and more uniform surface distribution compared with other 2 types membranes.



PRODUCT PARAMETERS

Product specification		OHD-14L	OHD-16L	OHD-18L	OHD-20L	OHD-22L	OHD-24L
A (Effective surface area)	m ²	1.4	1.6	1.8	2.0	2.2	2.4
V (blood priming volume)	mL	78	91	101	110	121	134
UF-coefficient	mL/h/mmHg	21	24	27	30	33	36
TMP max		500 mmHg					
Max. dialysate flow		800 mL/min					
ΔP (pressure drop blood)		≤13KPa (Q _B =300 mL/min)					
Clearance rate Q _B =200mL/min Q _D =500mL/min Q _F =10mL/min	Urea	182	189	193	197	200	200
	Creatinine	170	180	187	193	198	200
	Phosphate	170	174	181	193	196	199
	Vitamin B ₁₂	110	119	130	145	161	173
Clearance rate Q _B =300mL/min Q _D =500mL/min Q _F =10mL/min	Urea	245	251	259	266	274	286
	Creatinine	234	238	246	253	260	267
	Phosphate	217	224	239	251	256	265
	Vitamin B ₁₂	134	140	154	167	178	188
Clearance rate Q _B =400mL/min Q _D =500mL/min Q _F =10mL/min	Urea	283	292	302	313	325	338
	Creatinine	260	269	285	294	303	312
	Phosphate	252	259	269	281	291	301
	Vitamin B ₁₂	147	159	170	184	196	207
Membrane		PES hollow fiber membrane					
Sterilization method		Radiation sterilization					
Packaging		1 pc/pack 24 pcs/carton					

In vitro testing; According to EN1283, ISO 8637 and YY0053; The above data represent in vitro test performance only, and may vary depending on the patient's blood composition and clinical setting for in vivo use.

Product specification		OHD-14H	OHD-16H	OHD-18H	OHD-20H	OHD-22H	OHD-24H
A (Effective surface area)	m ²	1.4	1.6	1.8	2.0	2.2	2.4
V (blood priming volume)	mL	78	91	101	110	121	134
UF-coefficient	mL/h/mmHg	51	58	65	72	80	87
TMP max		500 mmHg					
Max. dialysate flow		800 mL/min					
ΔP (pressure drop blood)		≤13KPa (Q _B =300 mL/min)					
Clearance rate Q _B =200mL/min Q _D =500mL/min Q _F =10mL/min	Urea	197	198	199	200	200	200
	Creatinine	193	195	199	199	200	200
	Phosphate	181	186	191	194	196	196
	Vitamin B ₁₂	138	150	159	165	169	175
	B ₂ -MG B ₂	48	53	59	65	72	80
Clearance rate Q _B =300mL/min Q _D =500mL/min Q _F =10mL/min	Urea	275	283	288	292	292	297
	Creatinine	261	269	275	274	278	283
	Phosphate	236	248	255	262	268	274
	Vitamin B ₁₂	168	184	195	203	211	223
	B ₂ -MG B ₂	/	/	/	/	/	/
Clearance rate Q _B =400mL/min Q _D =500mL/min Q _F =10mL/min	Urea	318	332	344	350	352	365
	Creatinine	290	300	311	320	330	338
	Phosphate	268	284	296	310	318	326
	Vitamin B ₁₂	186	202	218	225	233	245
	B ₂ -MG B ₂	/	/	/	/	/	/
S.C.	Inulin	0.9 ± 10 %					
	B ₂ -MG B ₂	≥ 0.7					
	myohemoglobin	≥ 0.55					
	albumin	≤ 0.01					
Membrane		PES hollow fiber membrane					
Sterilization method		Radiation sterilization					
Packaging		1 pc/pack 24 pcs/carton					

In vitro testing; According to EN1283, ISO 8637 and YY0053; The above data represent in vitro test performance only, and may vary depending on the patient's blood composition and clinical setting for in vivo use.

OWLIE HEMODIALYSIS BICARBONATE

(Sodium Bicarbonate Part B)

PRODUCT SUPERIORITY

Sterile NaHCO_3 powder was put into the shell and used directly on the dialysis machine. The concentrated liquid pump is not easy to appear stuck phenomenon which greatly reduces the failure rate of dialysis equipment.

The concentrated inhaled by concentrate B was;

- free of bacteria and impurities
- improved the quality of dialysis
- long-term survival rate of patients
- proportioned with Haemodialysis concentrate 1+34 (35X) or innovative mixing ratio 1+44 (45X)

Hemodialysis Bicarbonate CARTRIDGE

The hemodialysis bicarbonate cartridge is design to ensure the hemodialysis process easier, clean and safe disposal after treatment.

The design of cartridge provides:

- minimal waste
- less space storage
- less environmental impact compared to liquid bicarbonate canister

Code	Size	Packaging
HD-CART65	650 g/barrel	10 barrels/carton
HD-CART70	700 g/barrel	
HD-CART72	720 g/barrel	
HD-CART75	750 g/barrel	



Hemodialysis Bicarbonate BAG

(Customized design for Fresenius Hemodialysis Machine 4008S/5008)

Code	Size	Packaging
HD-4008BAG65	650 g/bag	10 barrels/carton
HD-4008BAG70	700 g/bag	
HD-4008BAG72	720 g/bag	
HD-4008BAG75	750 g/bag	
HD-5008BAG65	650 g/bag	10 barrels/carton
HD-5008BAG70	700 g/bag	
HD-5008BAG72	720 g/bag	
HD-5008BAG75	750 g/bag	

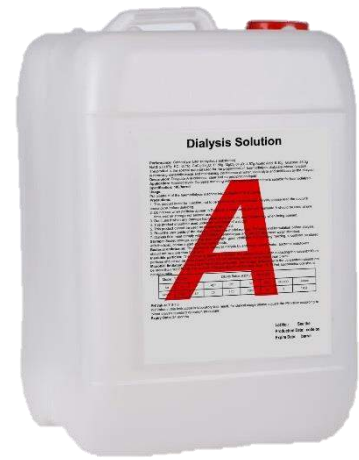


(Applicable for machine model from Gambro, Nipro, B Braun, SWS-4000, SWS-6000, W-T2008-B, W-T6008S, JHM-2028A)

OWLIE HEMODIALYSIS CONCENTRATE

PRODUCT SUPERIORITY

Dialysis solution is exchanged with substances in the blood system to improve the composition of the blood system, eliminate toxins and other metabolites in the body, and correct the balance of water, electrolyte and acid and base in the body of patients. The basic components of dialysis solution are sodium, potassium, calcium, magnesium, chlorine, alkali agent and glucose. As calcium carbonate and magnesium carbonate precipitate when sodium bicarbonate is combined with calcium chloride and magnesium chloride, alkali solution and acid solution should be separately configured in dialysis solution to prevent the formation of precipitate. So that's why the dialysis solution A and B can't be mixed together before using



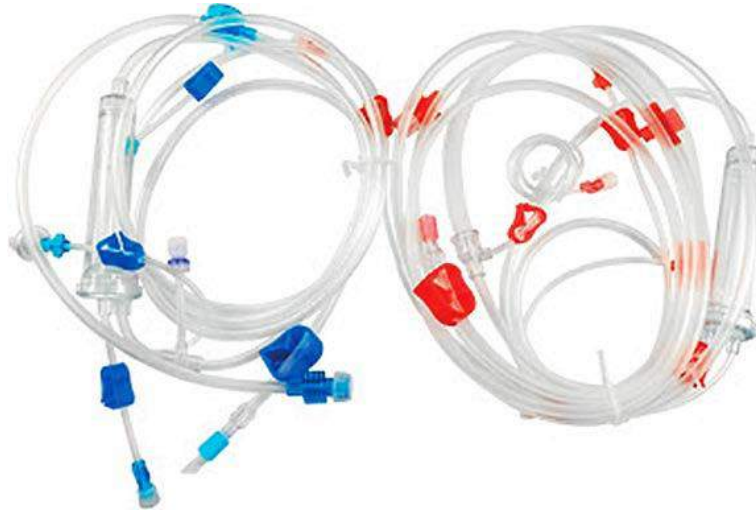
Acidic Bicarbonate Concentrates at 35X Mixing Ratio

Product name	K ⁺ mmol/l	Na ⁺ mmol/l	Ca ⁺⁺ mmol/l	Mg ⁺⁺ mmol/l	Cl ⁻ mmol/l	CH ₃ COO ⁻ mmol/l	Glucose g/L
HD-A35-G0-125	2.0	103	1.25	0.5	108.5	3.5	0.0
HD-A35-G0-150	2.0	103	1.50	0.5	109.0	3.5	0.0
HD-A35-G0-175	2.0	103	1.75	0.5	109.5	3.5	0.0
HD-A35-G1-125	2.0	103	1.25	0.5	108.5	3.5	1.0
HD-A35-G1-150	2.0	103	1.50	0.5	109.0	3.5	1.0
HD-A35-G1-175	2.0	103	1.75	0.5	109.5	3.5	1.0

Acidic Bicarbonate Concentrates at 45X Mixing Ratio

Product name	K ⁺ mmol/l	Na ⁺ mmol/l	Ca ⁺⁺ mmol/l	Mg ⁺⁺ mmol/l	Cl ⁻ mmol/l	CH ₃ COO ⁻ mmol/l	Glucose g/L
HD-A45-G0-125	2.0	103	1.25	0.5	108.5	3.5	0.0
HD-A45-G0-150	2.0	103	1.50	0.5	109.0	3.5	0.0
HD-A45-G0-175	2.0	103	1.75	0.5	109.5	3.5	0.0
HD-A45-G1-125	2.0	103	1.25	0.5	108.5	3.5	1.0
HD-A45-G1-150	2.0	103	1.50	0.5	109.0	3.5	1.0
HD-A45-G1-175	2.0	103	1.75	0.5	109.5	3.5	1.0

OWLIE HEMODIALYSIS BLOOD TUBING LINE



PRODUCT CHARACTERISTIC

1. Using medical grade material with good biocompatibility, good elasticity, no knotting, no deformation.
2. Medical high precision extrusion machine and special mould are used, which can make the tubes smooth and reduce the damage to human red cells.
3. Different sizes and structures are available. It can be used with the different haemodialysis equipment at home and abroad and can be equipped with different accessories to meet the requirements of clinical treatments.
4. Pump tubes are with good fatigue resistance. It can keep shape for more than 10-hours or more squeezing
5. Sterilized product. Single use only.

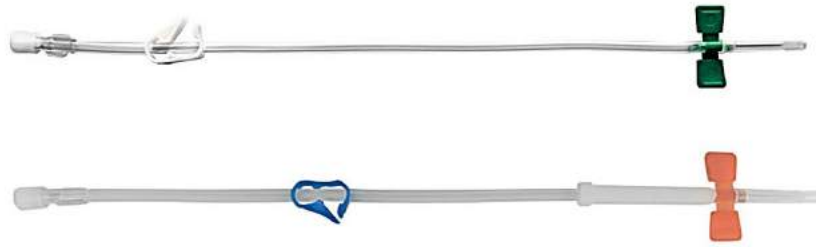
PRODUCT SPECIFICATION

Code	Specification	Pump Tube	Venous Chamber	Packaging
HD-B-BL20-A	Blood Tubing Basic	8 - 12 mm	20 mm	30 pcs/carton
HD-3-BL20-B	Blood Tubing 3-in-1 with Infusion Set	8 - 12 mm	20 mm	
HD-4-BL20-BC	Blood Tubing 3-in-1 with Infusion Set and Priming Bag	8 - 12 mm	20 mm	

A - with spike, B - with infusion set, C - Priming Bag

Special Order for Venous Chamber sizes of 22mm and 30mm

OWLIE A.V. FISTULA NEEDLE



PRODUCT CHARACTERISTIC

1. High elastic medical grade materials with good elasticity.
2. High quality imported needles and ultra-thin double-curved sharp needle tips to reduce tissue damage and pain.
3. Fine and uniform silicification treatment, good biocompatibility and less puncture needles.
4. Ergonomic clamp design make operation simple and convenient.
5. The anti-slip wing design with concave-convex buckle is more in line with clinical use
6. Protective caps can effectively prevent from being punctured by the needles, avoid blood contamination and protect clinical users.
7. Sterilized product. Single use only.

PRODUCT SPECIFICATION

Code	Specification		Wing Type	Color	Packaging
HD-AVF14-R	14G	2.1	Rotating	Purple	50 Pcs/Box 10 Boxes/Carton
HD-AVF14-F	14G	2.1	Fixed		
HD-AVF15-R	15G	1.8	Rotating	Yellow	
HD-AVF15-F	15G	1.8	Fixed		
HD-AVF16-R	16G	1.6	Rotating	Green	
HD-AVF16-F	16G	1.6	Fixed		
HD-AVF17-R	17G	1.4	Rotating	Orange	
HD-AVF17-F	17G	1.4	Fixed		