



RADIOLOGY ARCHIVAL VIEWING INFORMATION COMMUNICATION SYSTEM

The next generation solution of digitalization radiology system. Replacing local film archive with fully digital images for faster and better images study and result sharing

ADVANTAGES & BENEFIT



COST EFFICIENT

No film/hardcopy produced (unless in case of needed). Imagine the saving!



MINIMAL HUMAN ERROR

MWL Modality Work List, sends patient's data directly without having the health personal to key-in onto the modality data system



HYBRID STANDALONE

Enjoy the benefits of having digital system even without **EMR/HIS** or **RIS. RAViCS RMS** has the features to register patients, scheduling appointment and also radiologist reporting



CUSTOMIZATION WORKFLOW

The system is tailored to cater existing or desired workflow



HASSLE FREE

Patient's scanned images and reports are kept systematically, readily to be retrieved by doctors and radiologist



HL7 READY

Health Level Seven International Standard ready for exchanging and developing electronic health record with other system



BUILT-IN HSM

HSM helps to make more efficient use of storage devices and lowers storage costs. It is especially useful in large-scale environments that support massive data sets and long-term storage.

RAViCS

Our Offers



Allows you to store all type of images from various type of modalities including of recording videos from Operation Theater (Dicom and non-Dicom format).



(Dicom viewer) as a web-based DICOM Viewer for PAC server that is aimed at making diagnoses, viewing, archiving and transmitting medical images.



RAViCS-RMS is a platform for registering new patients, set an appointment schedule, create and view patient's report. Its MWL (Modality Work List) will automatically send patient's data onto the modality and minimise human error.

With **RAViCS-RMS**,

- Patient's report can be embedded to the scanned image and shared via the network for review by other doctors.
- Easily get the monthly report statistic and billing overview

International Certifications

ISO
13485:2016

CE 0197
Class IIb certified

FDA Thai
CERTIFIED

FDA K162011
CLEARED 510(k)

MHRA UK
REGISTERED

Singapore
Class b

Russia
Class IIb

Switzerland
Class IIb

IHE XDS-I.b
PASSED

MEDICAL CART

PM-OC-IT

Specifications:

Name	Medical Cart for PC Desktop
Monitor Size	15 - 32 inches
Standard	VESA 75 x 75 mm (Min) 100 x 100 mm (Max)
Load Capacity	1 - 7 kg
Storage Box Size	350 x 250 x 100 mm
Material	Aluminium + Plastic
Tray Size	600 x 420 mm Keyboard tray 350 mm
Height Adjust	1050 - 1150 mm
Base Plate Size	600 x 560 mm
PC Holder	0 - 220 mm extension
Colour	White

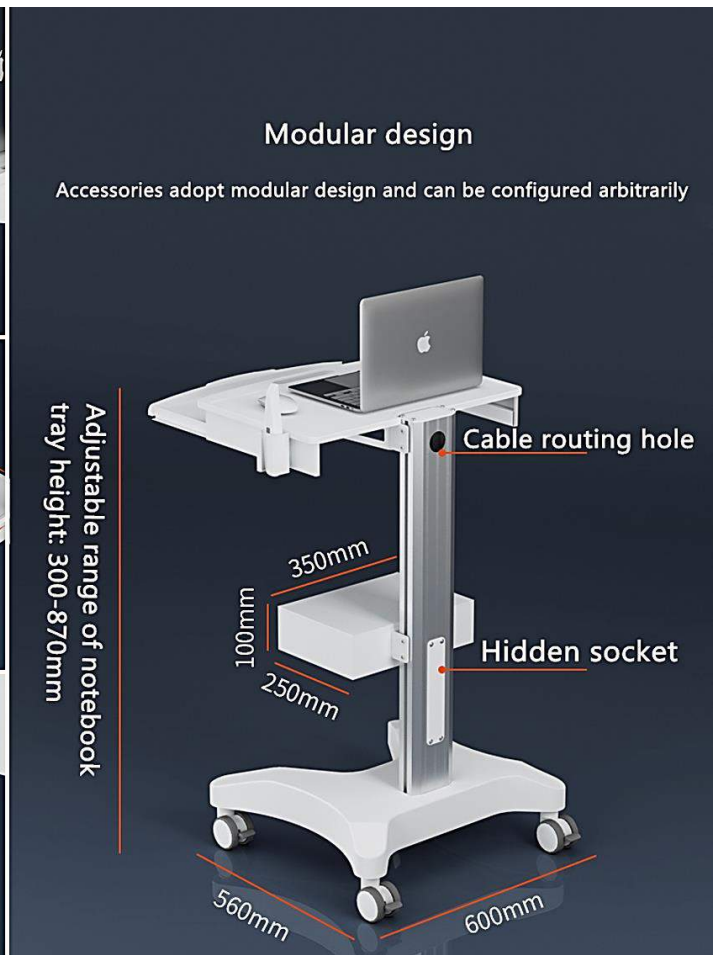


MEDICAL CART

PM-OC-3

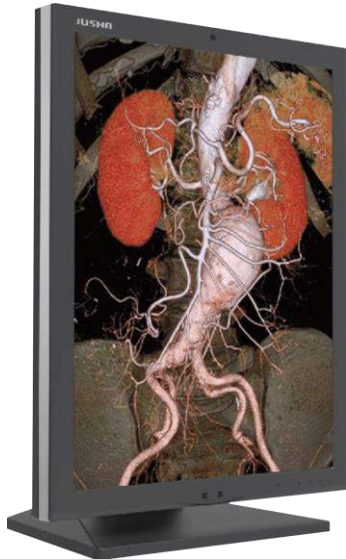
Specifications:

Name	Medical Cart for Laptop
Monitor Size	12 - 17 inches Laptop
Load Capacity	10 kg
Storage Box Size	350 x 250 x 100 mm
Material	Aluminium + Plastic
Tray Size	600 x 420 mm (OPTIONAL) Keyboard tray 350 mm extension
Base Plate Size	600 x 560 mm
PC Holder	0 - 220 mm extension
Colour	White



MEDICAL DIAGNOSTIC DISPLAY

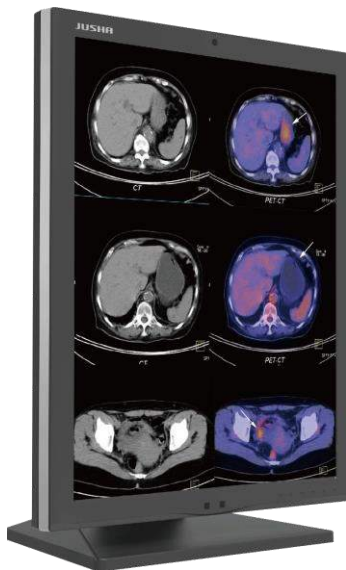
2MP Color Medical Diagnostic Display



Model	C270G
Backlight	LED
Size	21.3"
Type	Color
Active Display	432(H) x 324(V) mm
Resolution	1600 x 1200 1200 x 1600
Pixel Pitch	0.270 x 0.270 mm
Response Time	16ms (8ms + 8ms)
Brightness (typical)	1000 cd/m ²
DICOM calibrated luminance (typical)	350cd/m ² (Default) 600cd/m ² (Max)
Contrast Ratio (panel typical)	1400 : 1
LUT depth	281.47 trillion Colors (16bit)
View angle	≥ 178° (CR ≥ 10)
*Sensor	Backlight Sensor Front Sensor Human Inductive Sensor Ambient Light Sensor Temperature Sensor
LUT	DICOM, GAMMA 2.2, GAMMA 2.4, DSA, DSI, CT/MRI
Video Signals Input	DVI-D x 1
Video Signals Output	DP x 1
Power Requirements	12VDC-4A
Cabinet color	Cold Grey
Dimensions (With stand)	382 x 635 x 238 mm
Dimensions (Without stand)	382 x 490 x 77 mm
Net weight (With stand)	11 kg
Net Weight (Without stand)	7.5 kg

MEDICAL DIAGNOSTIC DISPLAY

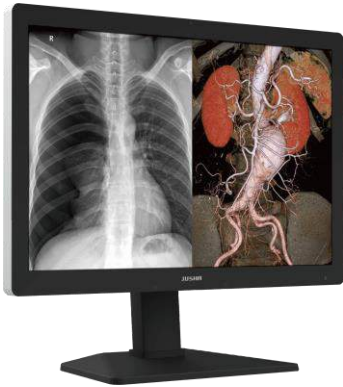
3MP Color Medical Diagnostic Display



Model	C350G
Backlight	LED
Size	21.3"
Type	Color
Active Display	433.15(H) x 324.86(V) mm
Resolution	2048 x 1536 1536 x 2048
Pixel Pitch	0.2115 x 0.2115 mm
Response Time	25ms (15ms + 10ms)
Brightness (typical)	1000 cd/m ²
DICOM calibrated luminance (typical)	800cd/m ² (Max)
Contrast Ratio (panel typical)	1500 : 1
Color depth	1.07 billion (10 bit)
LUT depth	281.47 trillion Colors (16 bit)
View angle	≥ 178° (CR ≥ 10)
*Sensor	Backlight Sensor Front Sensor Human Inductive Sensor Ambient Light Sensor Temperature Sensor
LUT	DICOM, GAMMA 2.2, GAMMA 2.4, DSA, DSI, CT/MRI
Video Signals Input	DVI-D x1 (8 bit) DP1.2 x1 (10 bit)
Video Signals Output	DP x 1
Power Requirements	12VDC-3.75A
Cabinet color	Cold Grey
Dimensions (With stand)	382 x 635 x 238 mm
Dimensions (Without stand)	382 x 490 x 77 mm
Net weight (With stand)	11.95 kg
Net Weight (Without stand)	6.35 kg

MEDICAL DIAGNOSTIC DISPLAY

3MP Color Medical Diagnostic Display



Model	C630G
Backlight	LED
Size	30"
Active Display	645.5(H) x 403.0(V) mm
Resolution	3280 x 2048
Pixel/Dot Pitch	Pixel, 0.197 x 0197 mm
Ton + Toff Response	30ms (15ms + 15ms)
Brightness (typical)	1050 cd/m ²
Calibrated brightness	500 cd/m ² (Max.)
Contrast Ratio (panel typical)	1000 : 1
LUT depth	281.47 trillion Colors (16bit)
View angle	≥ 170° (CR ≥ 10)
*Sensor	Backlight Sensor Front Sensor Human Inductive Sensor Ambient Light Sensor Temperature Sensor
Gamma presets	DICOM Presets and GAMMA GSDF
LUT	DICOM, GAMMA 2.2, GAMMA 2.4, DSA, DSI, CT/MRI
Video Signals Input	DVI-D x 1, DP x 2
Video Signals Output	DP x 1 (Daisy chain)
Power Requirements	12VDC 9.2A
Power Consumption	150W (Max)
Power Consumption (Typical)	130W
Cabinet color	Matte black
Dimensions (With stand)	705 x 567 x 262 mm
Dimensions (Without stand)	705 x 477 x 77 mm
Net weight (With stand)	19.8 kg
Net weight (Without stand)	15.6 kg
Hole Spacing	VESA: 100 x 100 mm
Osd Languages	Chinese, English

MEDICAL DIAGNOSTIC DISPLAY

8MP Color Diagnostic Monitor



Model	C820G
Backlight	LED
Size	31.5"
Type	IPS
Active Display	697.31(H) x 392.23(V) mm
Resolution	3840 x 2160 (8MP)
Aspect Ratio	16 : 9
Pixel Pitch	0.18159 x 0.18159
Response Time	14ms
Brightness (typical)	400 cd/m ²
Contrast Ratio (panel typical)	1300 : 1
Color depth	10 bits
LUT depth	14 bits
View angle	≥ 178° (CR ≥ 10)
*Sensor	Backlight Sensor Front Sensor Ambient Light Sensor Temperature Sensor
Video Signals Input	DVI-D : 3840 x 2160 @ 30Hz (8 bit) DP1 : 3840 x 2160 @ 50Hz (10 bit) DP2 : 3840 x 2160 @ 60Hz (10 bit)
Power Requirements	24VDC-3.5A
Power Consumption	80W (Max)
Power Consumption (Typical)	50W
Dimensions (With stand)	731.4 x 538.9 x 262 mm
Dimensions (Without stand)	731.4 x 454.2 x 65.7 mm
Net weight (With stand)	15.6 kg
Net Weight (Without stand)	11.4 kg
Hole spacing	VESA: 100 x 100 mm
Qualitas QA Software	✓

MEDICAL DIAGNOSTIC DISPLAY

Medical Color Monitor for Mammography



Model	C1210G
Backlight	LED
Size	31"
Resolution	4200 x 2800
Brightness (typical)	1200 cd/m ² (Max.)
Calibrated brightness	800 cd/m ² (Max.)
Contrast Ratio (panel typical)	1500 : 1
LUT depth	281.47 trillion Colors (16 bit)
Panel Color Depth	10 bit (DP), 8 bit (DVI-D)
View angle	≥ 178° (CR ≥ 10)
*Sensor	Backlight Sensor Front Sensor Human Body Sensor Ambient Light Sensor Temperature Sensor
LUT	DICOM, GAMMA 2.2, GAMMA 2.4, DSA, DSI, CT/MRI, Bypass
Video Signals Input	DP x 2
Power Requirements	AC 100-240V
Power Consumption	150W
Cabinet color	Black glass Silver front frame and black back cover
Dimensions (With stand)	701.3 x 589 (+65) x 245 mm
Dimensions (Without stand)	701.3 x 500 x 86.8 mm
Net weight (Without stand)	17.6 kg 6.5 kg (electrical stand)
Hole Spacing	VESA: 100 x 100 mm

MEDICAL DIAGNOSTIC DISPLAY

2MP Medical Color Review Monitor



Model	CR240G
Backlight	LED
Size	24"
Active Display	518.4(H) x 324(V) mm
Resolution	1920 x 1200
Pixel/Dot Pitch	Dot, 0.27 x 0.27 mm
Ton + Toff Response	14ms
Brightness (typical)	600 cd/m ² (Max.)
Calibrated brightness	500 cd/m ² (Max.)
Contrast Ratio (panel typical)	1000 : 1
LUT depth	16.7M
View angle	≥ 178° (CR ≥ 10)
LUT	DICOM, GAMMA 2.2, CT/MRI, USER Mode1, USER Mode2, USER Mode3
Video Signals Input	DVI-D x 1, DP x 1, HDMI x 1
Power Requirements	AC 100-240V 50-60Hz, 3-1.5A
Power Consumption	<40W
Power Consumption (Typical)	30W
Cabinet color	Silver Gray
Dimensions (With stand)	653.4 x 469.7 x 250.4 mm
Dimensions (Without stand)	653.4 x 392.4 x 80.0 mm
Net weight (With stand)	9 kg
Net weight (Without stand)	6.5 kg
Hole Spacing	VESA: 100 x 100 mm